

PHASE 2 WEST END CONSTRUCTION

Schedule V

(November 2015 – February 2016)

28L TORA/TODA shortened to allow daytime work beyond 28L departure end.

28L LDA: 6,000'

28L ASDA: 6,183'

28L TORA/TODA: 6,615'

10R LDA: 6,674'

10R ASDA: 6,800'

10R TORA/TODA: 6,974'

Phase 2, Schedule V

November 2015 – January 2016

- 28L approach LOC out of service (NOTAM)
- New PAPI and REIL operational
- Nighttime runway closures (11:30 PM – 5:30 AM)
- Anticipated date of new procedures publication: 2/4/16

Phase 2, Schedule V (cont'd)

November 2015 – January 2016

- 10R approach PAPI/GS out of service
- 10R temporary REILS/runway end lights
- Nighttime runway closures (11:30 PM – 5:30 AM)
- Anticipated date of new procedures publication: 2/4/16

NO.	DATE	REVISION	BY	APPD.	

GENERAL NOTES

- | | | | | |
|----|--|----------|----------|----------|
| 1. | THE EXACT LOCATION AND LIMITS OF THE TYPE 1 LOW PROFILE BARRICADES AS SHOWN ON THIS SHEET MAY BE MODIFIED IN THE FIELD BY THE ENGINEER AT NO ADDITIONAL COST TO THE OWNER. | | | |
| 2. | RUNWAY 10R-28L AND ALL OTHER NON-MOVEMENT AND MOVEMENT AREAS WITHIN THE AOA WHICH ARE NOT DESIGNATED TO BE CLOSED TO AIRCRAFT TRAFFIC, SHALL REMAIN OPEN TO AIRCRAFT OPERATIONS AT ALL TIMES DURING CONSTRUCTION. | | | |
| 3. | TAXIWAY B WEST OF TAXIWAY D SHALL BE CLOSED FOR THE DURATION OF THIS SCHEDULE. | | | |
| 4. | CONTRACTOR SHALL INSTALL RUNWAY AND TAXIWAY PAVEMENT MARKINGS IN COMPLIANCE WITH ADVISORY CIRCULARS 150/5370-2F AND 150/5340-1K PRIOR TO OPENING RUNWAY 10R-28L TO AIRCRAFT LANDING AND TAKE-OFF OPERATIONS. AS A MINIMUM FOR SAFE RUNWAY OPERATIONS MARKINGS SHALL INCLUDE: RUNWAY DESIGNATION; DISPLACED THRESHOLD BAR AND ARROWHEADS; RUNWAY CENTERLINE; RUNWAY EDGE MARKINGS; DEMARCATION BAR AND ARROWHEADS (IN VFR CONDITION); RUNWAY AIMING POINTS; RUNWAY TOUCHDOWN MARKINGS; AND ALL TAXIWAY LEAD-IN LINES. | | | |
| 5. | RUNWAY 10R LENGTHS DURING CONSTRUCTION ARE AS FOLLOWS: | | | |
| | LDA | ASDA | TORA | TODA |
| | 6,574 FT | 6,800 FT | 6,974 FT | 6,974 FT |
| 6. | RUNWAY 28L LENGTHS DURING CONSTRUCTION ARE AS FOLLOWS: | | | |
| | LDA | ASDA | TORA | TODA |
| | 6,000 FT | 6,183 FT | 6,615 FT | 6,615 FT |

CONTRACTOR RESTRICTION AND LIMITATIONS

1. ALL WORK NECESSARY FOR CHANGING RWY 10R APPROACH TO A VFR RWY INCLUDING: TEMPORARY PAVEMENT MARKINGS FOR THE DEMARCATION BAR AND ARROWS, THE MODIFIED TWY LEAD-IN LINE AND TWY EDGE MARKINGS; THE BLACK OUT OF EXISTING RWY EDGE STRIPS; THE OBLITERATION OF EXISTING RWY MARKINGS AND THE TWY CENTERLINE AND EDGE MARKINGS; AND THE ENERGIZING OF THE TEMPORARY RELOCATED DISPLACED THRESHOLD LIGHTS AND TEMPORARY REL'S SHALL BE COMPLETED DURING ONE NIGHT-TIME CLOSURE OF RWY 10R-28L.
2. GRADING WITHIN RSA MUST BE IN COMPLIANCE WITH FAA AC 150/5370-2F TO PERMIT DAYTIME USE OF RUNWAY.
3. DURING EMAS INSTALLATION, FULL ROWS OF BLOCKS MUST BE COMPLETED AT THE END OF EACH WORK SHIFT. PARTIALLY COMPLETED ROWS WILL NOT BE ALLOWED.
4. CONSTRUCTION EQUIPMENT, PERSONNEL, AND MATERIAL CANNOT PENETRATE THE RWY 10R APPROACH SURFACE WHEN RUNWAY IS OPERATIONAL.
5. CONSTRUCTION EQUIPMENT, PERSONNEL, AND MATERIAL CANNOT PENETRATE THE RWY 10R DEPARTURE SURFACE WHEN RUNWAY IS OPERATIONAL.
6. CONSTRUCTION EQUIPMENT, PERSONNEL, AND MATERIAL CANNOT ENTER THE TEMPORARY RSA WHEN RUNWAY IS OPERATIONAL.
7. MINIMUM WINGTIP CLEARANCE FOR TDG 3 OF 34-FT MUST BE MAINTAINED WHEN RUNWAY IS OPERATIONAL.
8. CONSTRUCTION EQUIPMENT, PERSONNEL, AND MATERIAL CANNOT PENETRATE THE TAXIWAY 'A' OFA WHEN TAXIWAY IS OPERATIONAL.
9. UPON COMPLETION OF THE EMAS BLOCKS, THE INSTALLATION OF THE PAVEMENT MARKINGS FOR THE RW 10R DISPLACED THRESHOLD FINAL CONFIGURATION SHALL BE COMPLETED DURING ONE (1) NIGHT-TIME CLOSURE OF RW 10R-28L. MINIMUM PAVEMENT MARKINGS SHALL INCLUDE: RUNWAY DESIGNATION; THRESHOLD BAR AND ARROWHEADS; DISPLACED THRESHOLD ARROWHEAD AND MARKINGS; RUNWAY CENTERLINE; AND THE OBLITERATION OF ALL TEMPORARY PAVEMENT MARKINGS. ALL MARKINGS TO COMPLETE THE RUNWAY PAVEMENT MARKING SHALL BE CARRIED OUT DURING SUBSEQUENT RUNWAY NIGHTLY-CLOSURES.

MAJOR WORK ITEMS FOR THIS SCHEDULE

(RUNWAY 28L APPROACH COMPLETE AND FLIGHT CHECK COMPLETE)

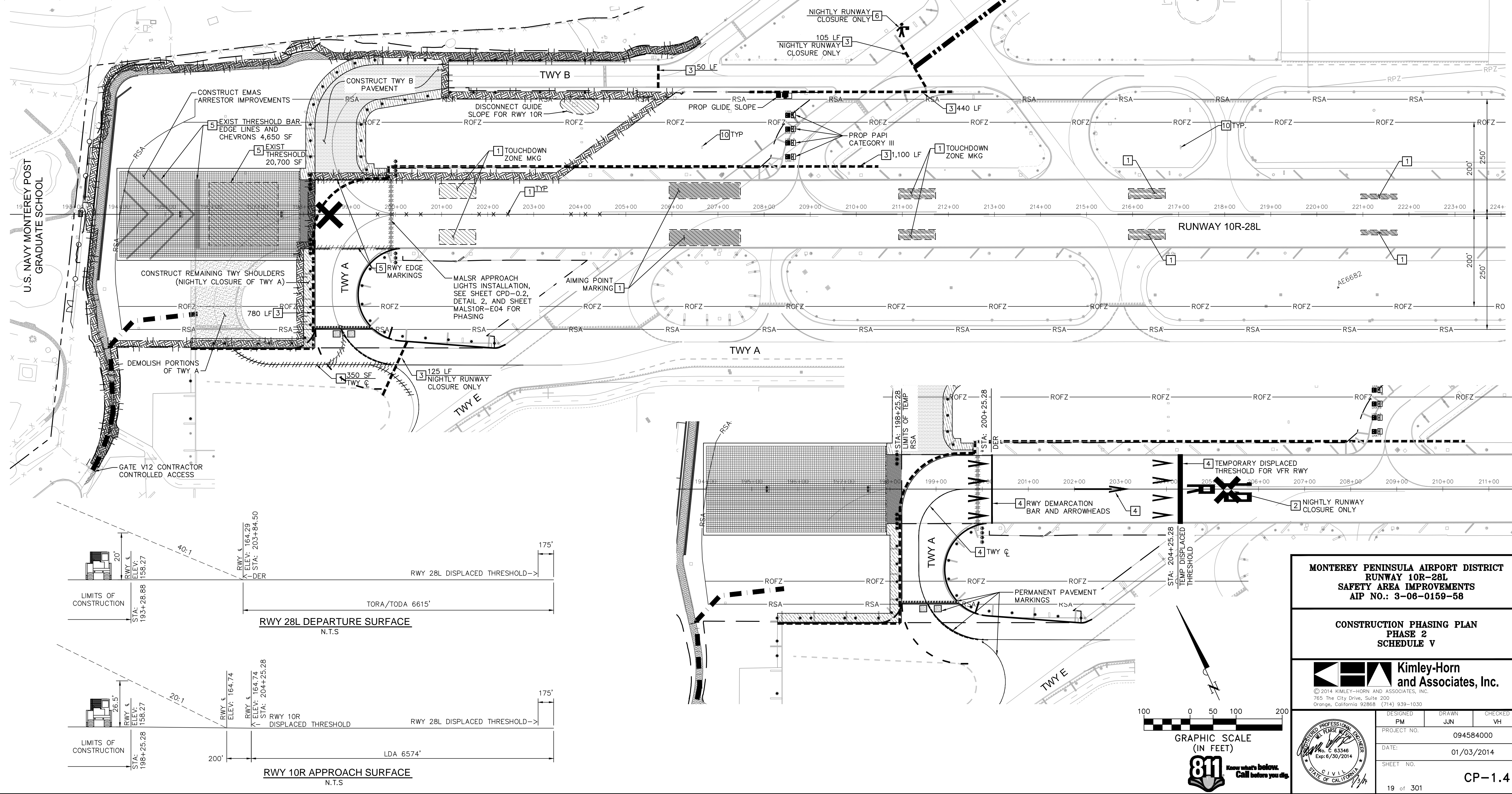
1. TEMPORARY PAVEMENT MARKINGS FOR RELOCATED DISPLACED THRESHOLD FOR Rwy 10R VFR APPROACH; BLACK OUT OF EXISTING RUNWAY MARKINGS; OBLITERATION OF EXISTING RUNWAY MARKINGS; ENERGIZING THE RELOCATED DISPLACED THRESHOLD LIGHTS AND THE TEMPORARY REL'S.
2. RUNWAY 10R APPROACH RETAINED FILL SLOPE COMPLETION:

EXISTING PAVEMENT REMOVAL FOR TAXIWAY 'B'; FINAL GRADING AND DRAINAGE; RUNWAY MILL AND REPLACE; ANCHOR BEAM INSTALLATION; EMAS BED PAVEMENT INSTALLATION; EMAS BLOCKS INSTALLATION; INSTALLATION OF THE RUNWAY END LIGHTS AND APPURTENANCES; COMPLETION OF THE TAXIWAY 'A' SHOULDER PAVEMENT; INSTALLATION OF TAXIWAY 'B';
MODIFICATION TO APPROACH LIGHTING SYSTEM FOR RUNWAY 10R APPROACH.
3. REMOVAL OF ALL TEMPORARY MARKINGS; INSTALLATION OF TEMPORARY PAVEMENT MARKINGS IN FINAL RUNWAY CONFIGURATION; ENERGIZING OF FINAL RUNWAY AND TAXIWAY AIRFIELD LIGHTS. ALL OF THESE ITEMS SHALL BE COMPLETED IN ONE NIGHT TIME CLOSURE OF RUNWAY 10R-28L.
4. INSTALLATION OF RELOCATED GLIDE SLOPE AND PAPI, FLIGHT CHECK (NOT PART OF THIS CONTRACT)
5. FINAL PAVEMENT MARKING APPLICATION AFTER PAVEMENT CURE PERIOD HAS ELAPSED.

PHASING CONSTRUCTION/DEMOLITION NOTES:

ITEMS TO BE TEMPORARILY INSTALLED, AND MARKINGS TO BE
OBLITERATED.

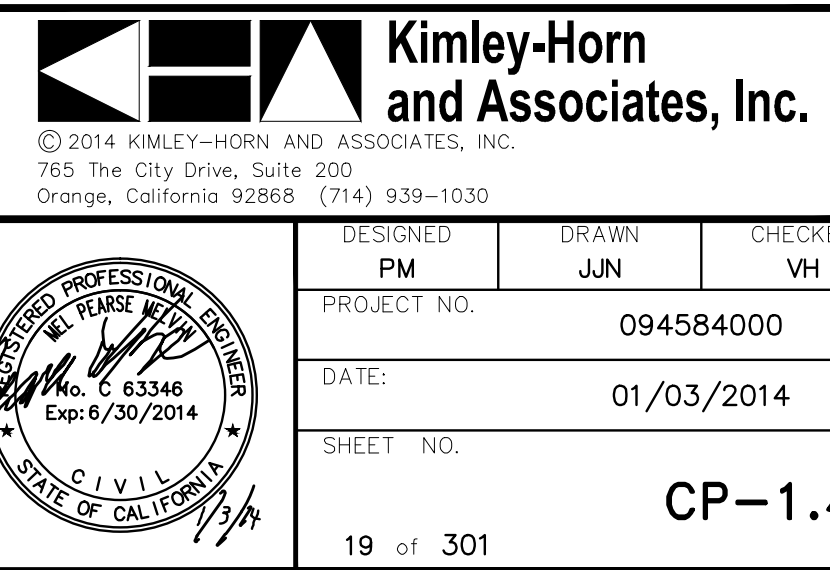
- 1 OBLITERATE EXISTING PAVEMENT MARKINGS
- 2 LIGHTED "X" RUNWAY CLOSURE SIGNAL
SEE DETAIL 2 ON SHEET CPD-0.2
- 3 TYPE 1 LOW PROFILE BARRICADE (LENGTH PER PLAN)
SEE DETAIL 1 ON SHEET CPD-0.2
- 4 INSTALL TEMPORARY PAVEMENT MARKINGS
- 5 BLACK OUT EXISTING PAVEMENT MARKING
- 6 FLAGGER CONTROLLED CROSSING
SEE DETAIL 3 ON SHEET CPD-0.2
- 10 COVER EXISTING RDR SIGNS



K:\ORA_AVIA\1094584000 Monterey RSA 2010\CADD\Plan Sheets\584000C05.dwg Jan 12, 2014 sardh.lujan

**MONTEREY PENINSULA AIRPORT DISTRICT
RUNWAY 10R-28L
SAFETY AREA IMPROVEMENTS
AIP NO.: 3-06-0159-58**

CONSTRUCTION PHASING PLAN PHASE 2 SCHEDULE V



CP-1.4